

STRALE – STimulated RAmAn LasEr

Dual-output synchronized fiber laser* for broadband coherent Raman imaging

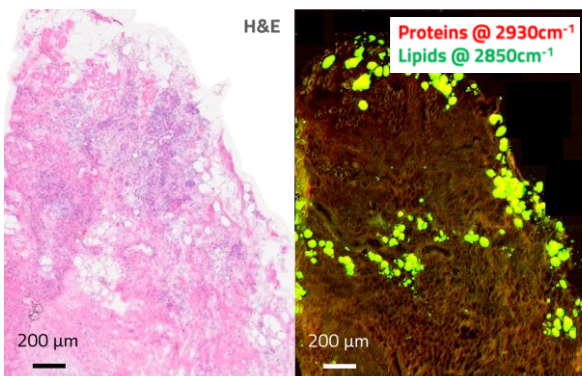
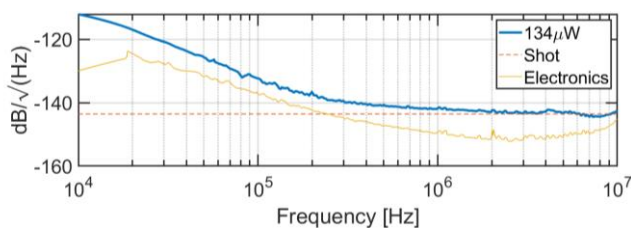
	Pump	Stokes
Central WL [nm]	792±1	1030
FWHM [nm]	≤ 1	≥ 30
Power [mW]	> 70@1–10 MHz mod. freq.	> 200 @20 MHz rep. rate
Energy [nJ]	> 7	> 10
Pulse width [ps]	<2	0.1 – 1
WN coverage [cm ⁻¹]	2800 – 3100 (full CH-stretching region)	
WN resolution [cm ⁻¹]	< 16	

Unique features

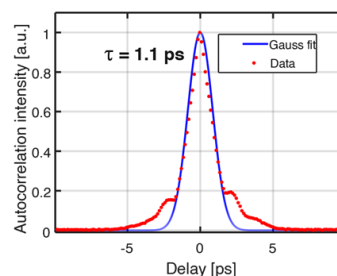
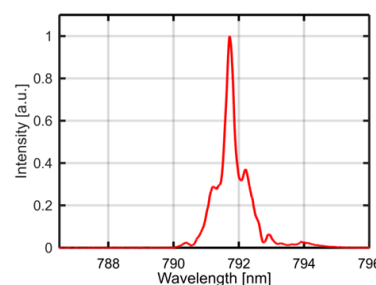
- Shot noise limited performances for $f > 600$ kHz
- Integrated pump beam modulator: modulation frequencies 1 – 10 MHz
- Synchronized dual output for plug-n-play SRS microscopy
- Dedicated multi-channel (38) detector for SRS microscopy down to 500ns pixel dwell time – (optional)
- Air-cooled, compact footprint: only 610 mm x 390 mm x 395 mm
- Embedded control and power electronics
- Simple and user friendly SW



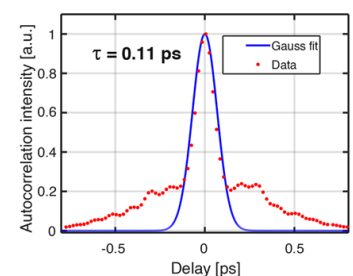
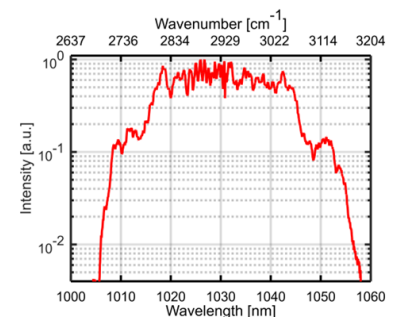
Single channel RIN@1030 nm



Pump



Stokes



*Patent pending architecture